

VALVOLA A SFERA TIPO MONOBLOCCO - P. TOTALE

MONOBLOC BALL VALVE - FULL BORE



VALVOLE INDUSTRIALI
INDUSTRIAL VALVES

SLE
20 T

NOTE COSTRUTTIVE:

Passaggio totale.
Temperatura esercizio: -20°C / +200°C
Dispositivo antistatico.
Attacchi BSP.

Versione A105

Corpo: acciaio ASTM A105
Leva e fermaleva: acciaio zincato
Componenti interni: acciaio inossidabile AISI316
O-Ring: Viton
Guarnizioni: PTFE

Versione A316

Corpo: acciaio inossidabile AISI 316
Leva e fermaleva: acciaio zincato
Componenti interni: acciaio inossidabile AISI 316
O-Ring: Viton
Guarnizioni: PTFE

A RICHIESTA:

Attacchi maschio BSP e NPT - Attacchi femmina NPT
Versione lucchettabile - Certificato PED - Certificato FIRESAFE
Certificato 3.1.

FEATURES:

Full bore.
Working temperature: -20°C / +200°C
Antistatic device.
BSP female.

A105 Version

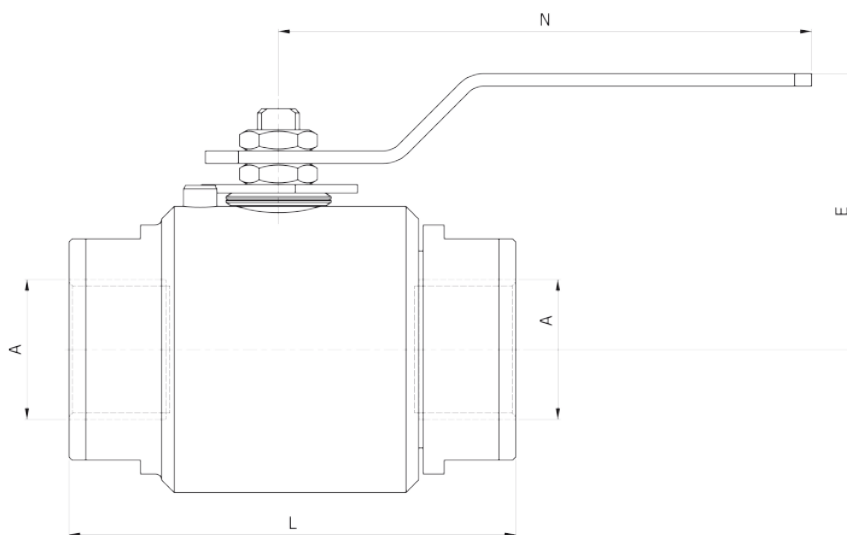
Body: ASTM A105 steel
Lever and stop: zinc-plated steel
Internal components : stainless steel AISI316
O-Ring: Viton
Seals: PTFE

A316 Version

Body: stainless steel AISI 316
Lever and stop: zinc-plated steel
Componenti interni: stainless steel AISI 316
O-Ring: Viton
Seals: PTFE

UPON REQUEST:

BSP and NPT male threads - NPT female threads
Locking device - PED certificate - FIRESAFE certificate
3.1 Certificate.



QUOTE / DIMENSIONS

TIPO / TYPE	A BSP	DN	E	L	N	PESO WEIGHT kg
SLE 20 T 1/4	1/4	11	62	65	150	0,600
SLE 20 T 3/8	3/8	11	62	65	150	0,600
SLE 20 T 1/2	1/2	15	70	75	150	0,900
SLE 20 T 3/4	3/4	20	80	90	185	1,550
SLE 20 T 1"	1"	25	90	100	185	2,200
SLE 20 T 1" 1/4	1" 1/4	32	95	115	285	5,500
SLE 20 T 1" 1/2	1" 1/2	38	100	125	285	4,400
SLE 20 T 2"	2"	48	105	150	380	6,100

CODICI / CODES

VERSIONE A316 VERSION A316

SERIE 800

CODICE / CODE	PRESSIONE MAX MAX PRESSURE
SLE 20 T 1/4 S800 A316	60 bar
SLE 20 T 3/8 S800 A316	60 bar
SLE 20 T 1/2 S800 A316	60 bar
SLE 20 T 3/4 S800 A316	60 bar
SLE 20 T 1" S800 A316	60 bar
SLE 20 T 1" 1/4 S800 A316	60 bar
SLE 20 T 1" 1/2 S800 A316	60 bar
SLE 20 T 2" S800 A316	60 bar

SERIE 3000

CODICE / CODE	PRESSIONE MAX MAX PRESSURE
SLE 20 T 1/4 S3000 A316	210 bar
SLE 20 T 3/8 S3000 A316	210 bar
SLE 20 T 1/2 S3000 A316	210 bar
SLE 20 T 3/4 S3000 A316	210 bar
SLE 20 T 1" S3000 A316	210 bar
SLE 20 T 1" 1/4 S3000 A316	210 bar
SLE 20 T 1" 1/2 S3000 A316	210 bar
SLE 20 T 2" S3000 A316	210 bar

SERIE 6000

CODICE / CODE	PRESSIONE MAX MAX PRESSURE
SLE 20 T 1/4 S6000 A316	420 bar
SLE 20 T 3/8 S6000 A316	420 bar
SLE 20 T 1/2 S6000 A316	420 bar
SLE 20 T 3/4 S6000 A316	420 bar
SLE 20 T 1" S6000 A316	420 bar
SLE 20 T 1" 1/4 S6000 A316	420 bar
SLE 20 T 1" 1/2 S6000 A316	420 bar
SLE 20 T 2" S6000 A316	420 bar

VERSIONE A105 VERSION A105

SERIE 800

CODICE / CODE	PRESSIONE MAX MAX PRESSURE
SLE 20 T 1/4 S800 A105	60 bar
SLE 20 T 3/8 S800 A105	60 bar
SLE 20 T 1/2 S800 A105	60 bar
SLE 20 T 3/4 S800 A105	60 bar
SLE 20 T 1" S800 A105	60 bar
SLE 20 T 1" 1/4 S800 A105	60 bar
SLE 20 T 1" 1/2 S800 A105	60 bar
SLE 20 T 2" S800 A105	60 bar

SERIE 3000

CODICE / CODE	PRESSIONE MAX MAX PRESSURE
SLE 20 T 1/4 S3000 A105	210 bar
SLE 20 T 3/8 S3000 A105	210 bar
SLE 20 T 1/2 S3000 A105	210 bar
SLE 20 T 3/4 S3000 A105	210 bar
SLE 20 T 1" S3000 A105	210 bar
SLE 20 T 1" 1/4 S3000 A105	210 bar
SLE 20 T 1" 1/2 S3000 A105	210 bar
SLE 20 T 2" S3000 A105	210 bar

SERIE 6000

CODICE / CODE	PRESSIONE MAX MAX PRESSURE
SLE 20 T 1/4 S6000 A105	420 bar
SLE 20 T 3/8 S6000 A105	420 bar
SLE 20 T 1/2 S6000 A105	420 bar
SLE 20 T 3/4 S6000 A105	420 bar
SLE 20 T 1" S6000 A105	420 bar
SLE 20 T 1" 1/4 S6000 A105	420 bar
SLE 20 T 1" 1/2 S6000 A105	420 bar
SLE 20 T 2" S6000 A105	420 bar