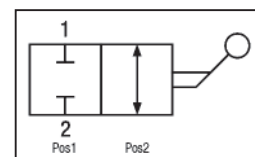


# RUBINETTO A SFERA A 2 VIE

## 2-WAY BALL VALVE

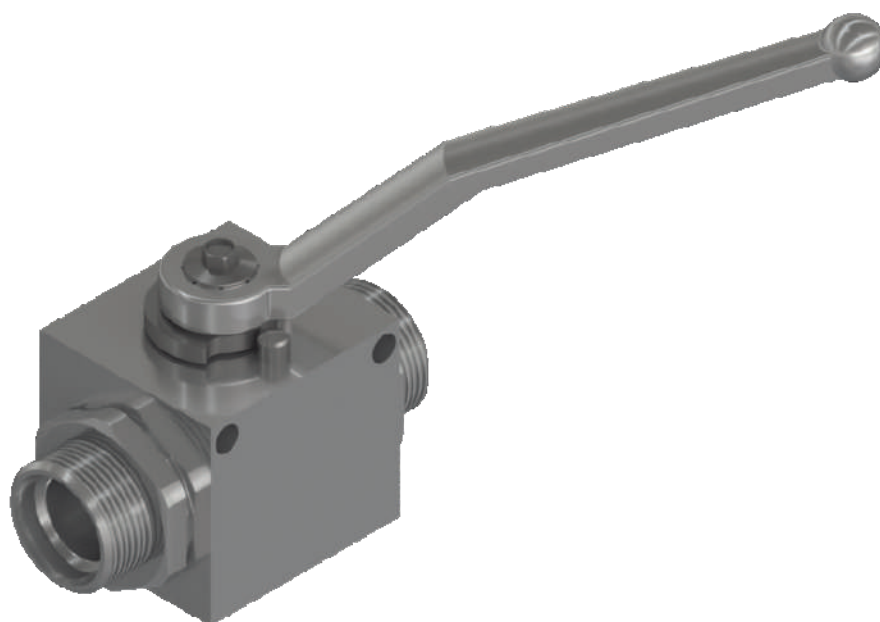
SCHEMA IDRAULICO  
HYDRAULIC DIAGRAM



DIN 2353 SERIE "S"

RUBINETTI A SFERA  
BALL VALVES

RS2/S  
DIN  
2353



### APPLICAZIONE:

È utilizzato per aprire o chiudere il flusso dell'olio, anche alla massima pressione.

### NOTE COSTRUTTIVE:

Corpo: acciaio zincato

Componenti interni: acciaio cromato e zincato

Leva: Zamak

Guarnizioni: Delrin

O-Ring: NBR

Temperatura d'esercizio max: -20°C / +80°C

Non ammettono trafilamento.

Ruotano in pressione.

### MONTAGGIO e FUNZIONAMENTO:

Passaggio libero del flusso con la leva in posizione 2.

Flusso bloccato completamente con la leva in posizione 1.

Collegare indifferentemente le due uscite (1 e 2) al ramo da intercettare.

La leva ruota di 90°.

### A RICHIESTA:

Leve speciali - Configurazioni speciali fuori standard

Guarnizioni speciali - Zincature e trattamenti speciali.

### APPLICATION:

The use of this valve is to open or close the flow in the system, even under max pressure.

### FEATURES:

Body: zinc-plated steel

Internal components: chromed and zinc-plated steel

Hand lever: Zamak

Seals: Delrin

O-Ring: NBR

Maximum operating temperature: -20°C / +80°C

It does not allow any leakage.

Rotation under pressure.

### MOUNTING AND OPERATION:

Free flow passage with lever in position 2.

Closed flow passage with lever in position 1.

Connect indifferently the two ports (1 and 2) to where flow has to be intercepted.

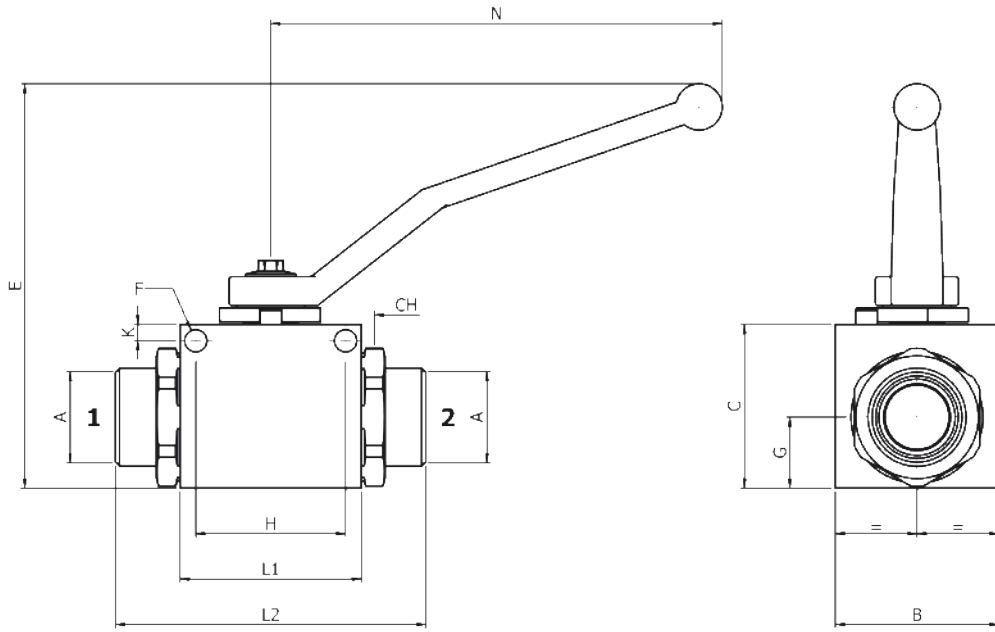
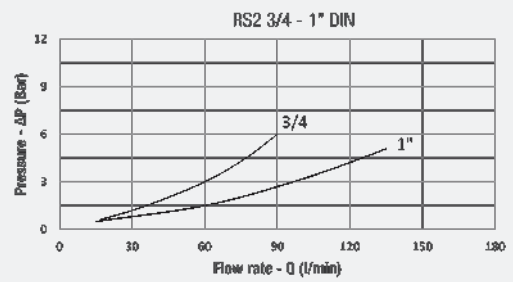
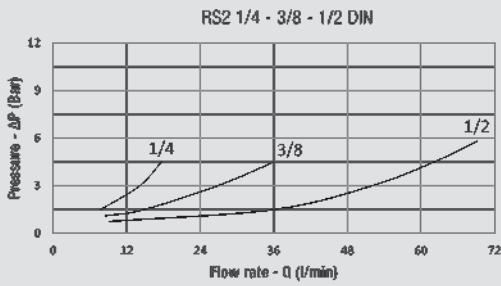
The lever rotates 90°.

### UPON REQUEST:

Special levers - Special configurations out of the standard

Special gaskets - Special treatments.

PERDITE DI CARICO  
PRESSURE DROPS CURVES



QUOTE / DIMENSIONS

TIPO/TYPE	A	B	C	E	F	G	H	K	L1	L2	N	CH	PN (bar)	PESO WEIGHT kg
RS2 1/4 8S	M16X1,5	25	35	74	4,5	14,7	25	6	36	71	107	22	500	0,350
RS2 1/4 10S	M18x1,5	25	35	74	4,5	14,7	25	6	36	67	107	22	500	0,350
RS2 1/4 12S	M20x1,5	25	35	74	4,5	14,7	25	6	36	67	107	22	500	0,350
RS2 3/8 10S	M18x1,5	30	40	78	5	18,4	35	5	43	76	107	27	500	0,490
RS2 3/8 14S	M22x1,5	30	40	78	5	18,4	35	5	43	82	107	27	500	0,490
RS2 3/8 16S	M24x1,5	40	40	78	5	18,4	35	5	43	82	107	27	500	0,490
RS2 1/2 20S	M30x2	40	40	78	6	17,2	38	5	48	91	107	30	500	0,730
RS2 3/4 25S	M36x2	55	55	128	8	22,7	49	6	62,5	111	155	41	400	1,550
RS2 1" 30S	M42x2	60	60	133	8	26	55	6	66,5	121	155	45	350	2,000
RS2 1" 38S	M52x2	60	60	133	8	26	55	6	66,5	126	155	55	350	2,000

CODICI / CODES

TIPO / TYPE	DN	Senza fori fissaggio Without fixing holes		Con fori fissaggio With fixing holes	
		CODICE / CODE		CODICE / CODE	
RS2 1/4 8S	6	526 1060 000		526 1160 000	
RS2 1/4 10S	6	526 1050 000		526 1150 000	
RS2 1/4 12S	6	526 1040 000		526 1140 000	
RS2 3/8 10S	10	526 2060 000		526 2160 000	
RS2 3/8 14S	10	526 2040 000		526 2140 000	
RS2 3/8 16S	10	526 2050 000		526 2150 000	
RS2 1/2 20S	13	526 3040 000		526 3140 000	
RS2 3/4 25S	20	526 4020 000		526 4120 000	
RS2 1" 30S	25	526 5030 000		526 5130 000	
RS2 1" 38S	25	526 5050 000		526 5150 000	