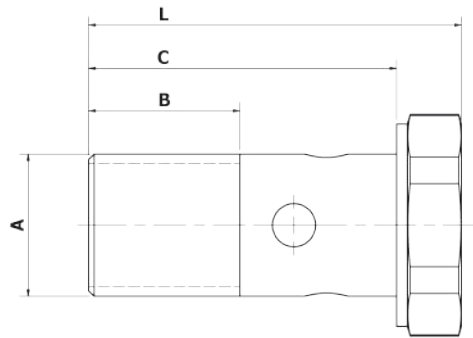
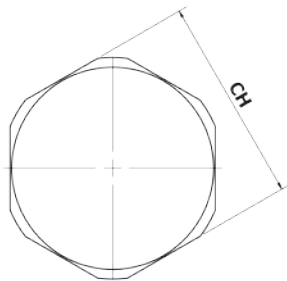


# ACCESSORI PER VRSE / VRDE DIN 2353

## ACCESSORIES FOR DIN 2353 VALVE

### VITE FORATA

#### BOLT



#### QUOTE / DIMENSIONS

TIPO / TYPE	A BSP	B	C	L	CH	PESO WIGHT
V 14 T12	1/4	13	27	33	19	0,350
V 38 T12	3/8	15	31	39	22	0,600
V 12 T15	1/2	18	38	47	27	0,970

#### NOTE COSTRUTTIVE:

Materiale: acciaio zincato

#### A RICHIESTA:

Versione doppia.

#### FEATURES:

Material: zinc-plated steel

#### UPON REQUEST:

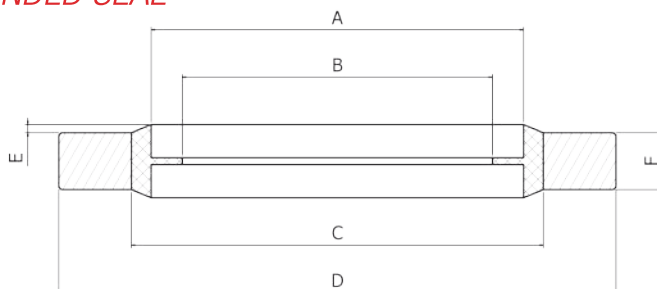
Double version.

VALVOLE E COMPONENTI  
VALVES AND COMPONENTS

V  
RB

### RONDELLA BONDED - Autocentranti

#### BONDED SEAL



#### QUOTE / DIMENSIONS

TIPO / TYPE	BSP	A	B	C	D	E	F	PESO WIGHT
RB 14	1/4	13,74	11,45	15,21	20,57	0,3	2,1	0,025
RB 38	3/8	17,28	14,96	18,75	23,80	0,3	2,1	0,030
RB 12	1/2	21,54	18,64	23,01	28,58	0,4	2,5	0,045

#### APPLICAZIONE:

Sono rondelle particolarmente indicate per pressioni molto alte e se utilizzate in applicazioni severe ne garantiscono una elevata sicurezza e tenuta.

#### NOTE COSTRUTTIVE:

Materiale : acciaio zincato

Elastomero: NBR

Colore : nero

#### APPLICATION:

These washers are particularly suitable for very high pressures and if used in severe applications they can guarantee a high safety and seal.

#### FEATURES:

Material: zinc-plated steel

Elastomer: NBR

Colour: black