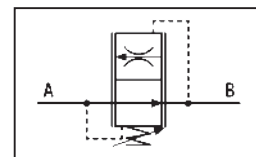


VALVOLA CONTROLLO DISCESA COMPENSATA REGOLABILE CON COLLETTORE

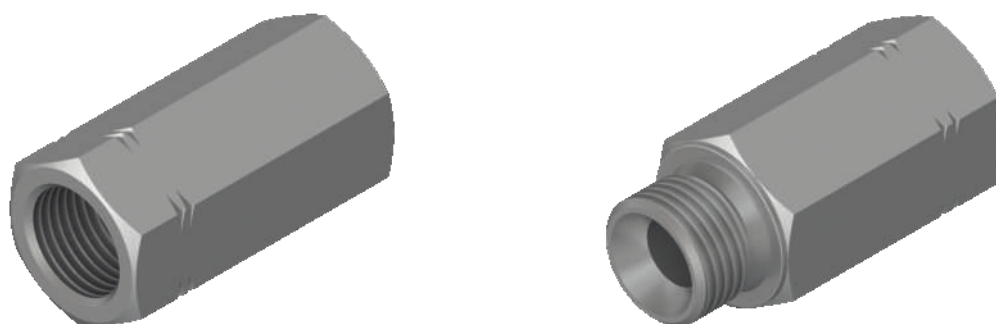
*ADJUSTABLE COMPENSATED DESCENT
CONTROL VALVE WITH CARTRIDGE*

SCHEMA IDRAULICO
HYDRAULIC DIAGRAM



VALVOLE E COMPONENTI
VALVES AND COMPONENTS

VRD/C



APPLICAZIONE:

È uno speciale collettore che permette il montaggio in linea della valvola VRD evitando la realizzazione di cavità apposite. Opzioni disponibili Maschio / Femmina e Femmina / Femmina.

NOTE COSTRUTTIVE:

Materiale: acciaio zincato

MONTAGGIO e FUNZIONAMENTO:

Inserire la valvola nell'apposita cavità facendo attenzione al senso di funzionamento.

A RICHIESTA:

Zincature speciali - Misure speciali.

APPLICATION:

It is a special cartridge that allow the VRD valve to be mounted in line avoiding the creation of special cavities. Available options Male / Female and Female / Female.

FEATURES:

Body: zinc-plated

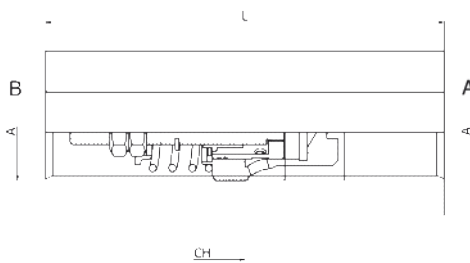
MOUNTING AND OPERATION:

Insert the valve in the appropriate cavity, paying attention to the operating sense.

UPON REQUEST:

Special zinc plating - Special sizes.

FEMMINA / FEMMINA
FEMALE / FEMALE



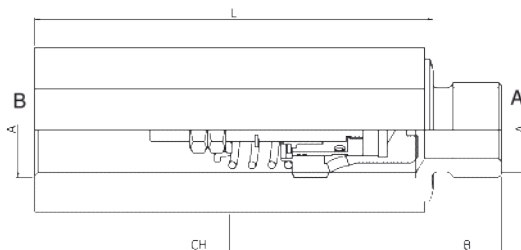
QUOTE / DIMENSIONS

TIPO / TYPE	A BSP	L	CH	PESO WEIGHT kg
VRD/C 1/4 F-F	1/4	66	19	0,110
VRD/C 3/8 F-F	3/8	70	25	0,120
VRD/C 1/2 F-F	1/2	80	28	0,200
VRD/C 3/4 F-F	3/4	100	35	0,290
VRD/C 1" F-F	1"	125	41	0,670
VRD/C 1" 1/4 F-F	1" 1/4	145	50	1,040

CODICI / CODES

VRD/C 1/4 F-F		VRD/C 3/8 F-F		VRD/C 1/2 F-F		VRD/C 3/4 F-F		VRD/C 1" F-F		VRD/C 1" 1/4 F-F	
l/min	CODICE/CODE	l/min	CODICE/CODE	l/min	CODICE/CODE	l/min	CODICE/CODE	l/min	CODICE/CODE	l/min	CODICE/CODE
1-1,6	420 1410 000	2,4-4	420 2410 000	16-21	420 3410 000	37-50	420 4410 000	80-100	420 5410 000	160-210	420 6410 000
1,5-2,5	420 1420 000	3,8-6,3	420 2420 000	20,5-28	420 3420 000	48-65	420 4420 000	100-130	420 5420 000	205-250	420 6420 000
2,4-4	420 1430 000	6,1-10	420 2430 000	27,5-37	420 3430 000	63-90	420 4430 000	128-162	420 5430 000	245-280	420 6430 000
3,9-6,3	420 1440 000	9,8-16	420 2440 000	36,5-50	420 3440 000	88-120	420 4440 000	160-200	420 5440 000	270-340	420 6440 000
6,2-10	420 1450 000	15,8-25	420 2450 000	48-65	420 3450 000	115-150	420 4450 000	195-250	420 5450 000	330-400	420 6450 000

MASCHIO / FEMMINA
MALE / FEMALE



QUOTE / DIMENSIONS

TIPO / TYPE	A BSP	B	L	CH	PESO WEIGHT kg
VRD/C 1/4 M-F	1/4	10	78	19	0,110
VRD/C 3/8 M-F	3/8	12	82	25	0,140
VRD/C 1/2 M-F	1/2	16	96	28	0,240
VRD/C 3/4 M-F	3/4	26	106	35	0,340
VRD/C 1" M-F	1"	35	135	41	0,750
VRD/C 1" 1/4 M-F	1" 1/4	30	155	50	1,090

CODICI / CODES

VRD/C 1/4 M-F		VRD/C 3/8 M-F		VRD/C 1/2 M-F		VRD/C 3/4 M-F		VRD/C 1" M-F		VRD/C 1" 1/4 M-F	
l/min	CODICE/CODE	l/min	CODICE/CODE	l/min	CODICE/CODE	l/min	CODICE/CODE	l/min	CODICE/CODE	l/min	CODICE/CODE
1-1,6	420 1310 000	2,4-4	420 2310 000	16-21	420 3310 000	37-50	420 4310 000	80-100	420 5310 000	160-210	420 6310 000
1,5-2,5	420 1320 000	3,8-6,3	420 2320 000	20,5-28	420 3320 000	48-65	420 4320 000	100-130	420 5320 000	205-250	420 6320 000
2,4-4	420 1330 000	6,1-10	420 2330 000	27,5-37	420 3330 000	63-90	420 4330 000	128-162	420 5330 000	245-280	420 6330 000
3,9-6,3	420 1340 000	9,8-16	420 2340 000	36,5-50	420 3340 000	88-120	420 4340 000	160-200	420 5340 000	270-340	420 6340 000
6,2-10	420 1350 000	15,8-25	420 2350 000	48-65	420 3350 000	115-150	420 4350 000	195-250	420 5350 000	330-400	420 6350 000